



HAFI Public Line – Design 202XL/830

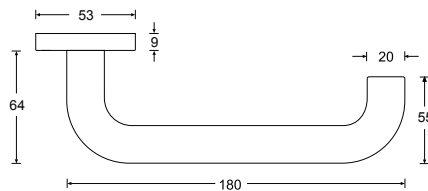
Maintenance-free door handle set with integrated ball bearing and low friction, self-lubricating equalizing bushing, spring loaded, zinc plated steel sub-construction, with rosettes and escutcheons, invisible fixation

1.500.000 movement cycles  
 free movement < 0.5 mm  
 free angular movement < 0.5 mm

Classification key according to DIN EN 1906

47\* - B11\*\* 50B      47 - B150A/B\*

\*Durability tested with 1.500.000 cycles  
 \*\*Safety tested with 3.000 N



- Satin stainless steel
- Polished stainless steel
- PVD coating
- SoftTouch coating