

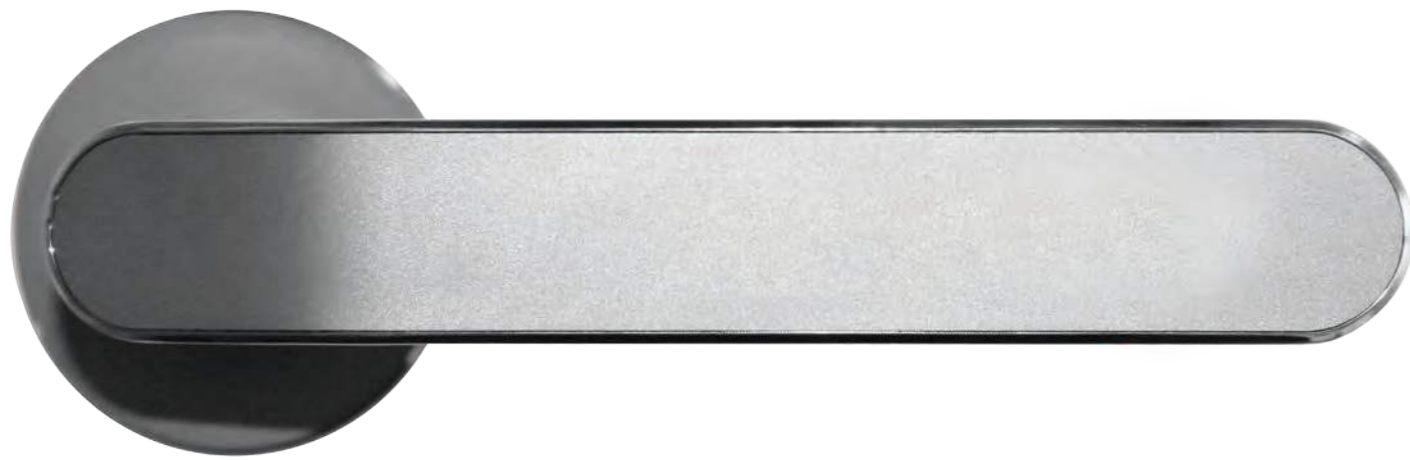
HAFI 



# Living space

The world of Door Handles – Exclusive

# info



<b>About HAFI</b> Information about HAFI	4
<b>Brilliant metal</b> PVD - Gems	6
<b>Change it!</b> Push and Click	10
<b>Safety first!</b> Safety certifications	12
<b>Flush Line</b> Flush-mounted aesthetics & reduced rosette design	14

# exclusive

<b>exklusiv. extraordinary. stylish.</b>	16
Look and feel	18
Door handles	42
Security and entrance fittings	43
Window handles	44
Lifting sliding door handles	45

<sup>+</sup> Cover picture - Model 311 Design by Studio F. A. Porsche in stainless steel glass bead blasted



# About HAFI

**HAFI Beschläge GmbH – giving the best to our customers around the world since 1978.**

## **Since 1978**

Hans Fink founded HAFI in 1978, today the company is managed by René Fink and Jochen Maier. We develop and manufacture fittings for customers around the world from our location in Elchingen, Germany. Our employees share our passion and give their best to our customers every day. In 2018, HAFI manufactured 450,000 fitting pieces for doors and windows.

## **Fitting products – we shape fine steel**

HAFI produces a number of fitting products out of stainless steel. The shape and surface finish can be produced individually.

Whether matte-brushed or polished, stainless steel surfaces are durable, elegant and timeless. Thanks to the exceptionally smooth and non-porous surface, stainless steel handles are very dirt-resistant and long-lasting.

## **Customised to meet the customer's wishes**

We turn our customer's ideas into reality, and accompany you from concept creation and prototype construction to multi-trade delivery of the item. Thanks to the PVD coating, we can produce fittings in various colours and surface finishes.

## **Multi-trade**

We have the right solution for any building type and any requirement. For door handles for residential building to electronic locking systems in public buildings.

## **Easy installation**

Our fittings prove that design and technology can go hand in hand. One example is our latest development – Flush Line technology for windows, doors and lifting-sliding doors.





# Mix it!

Create your door handle.

## 1. Select your handle rosette.



Round 1-piece



Round 2-piece



Square 1-piece



Square 2-piece

## 2. Select the keyhole rosette.



Profile cylinder round



Round cylinder round



Euro round



Warded lock round



Profile cylinder square



Round cylinder square



Euro square



Warded lock square

## 3. Select your surface.

### PVD - create highlights with metallic colours!

Rosé-gold, bronze, brass or black - create highlights with PVD-coated fittings. In addition to brilliant colour intensity, the PVD-coating also shines with excellent resistance to scratches and wear. The PVD surfaces are available in a matte and polished version.



Black



Bronze



Rosé-gold



Brass



# Brilliant metal

Turn your fittings into gems with PVD-coating.

Rosé-gold, bronze, brass or black – create highlights with PVD-refined fittings. In addition to brilliant colour intensity, the PVD-coating also shines with excellent resistance to scratches and wear. These fittings are guaranteed to turn heads!



Stainless steel polished



Stainless steel matte



Brass polished



Brass matte



Rosé-gold polished



Rosé-gold matte



Dark-bronze polished



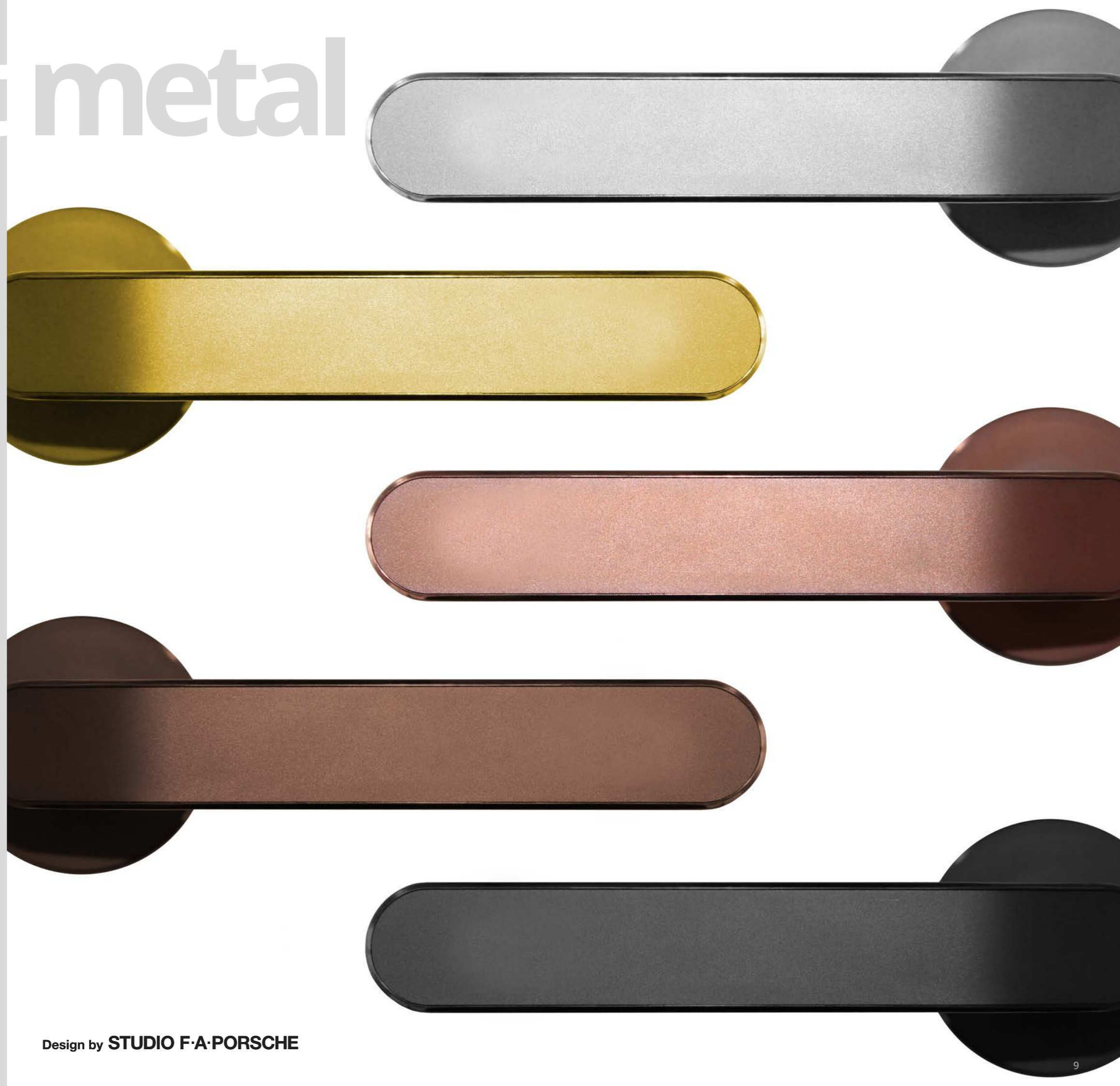
Dark-bronze matte



Black polished



Black matte



Design by **STUDIO F·A·PORSCHE**

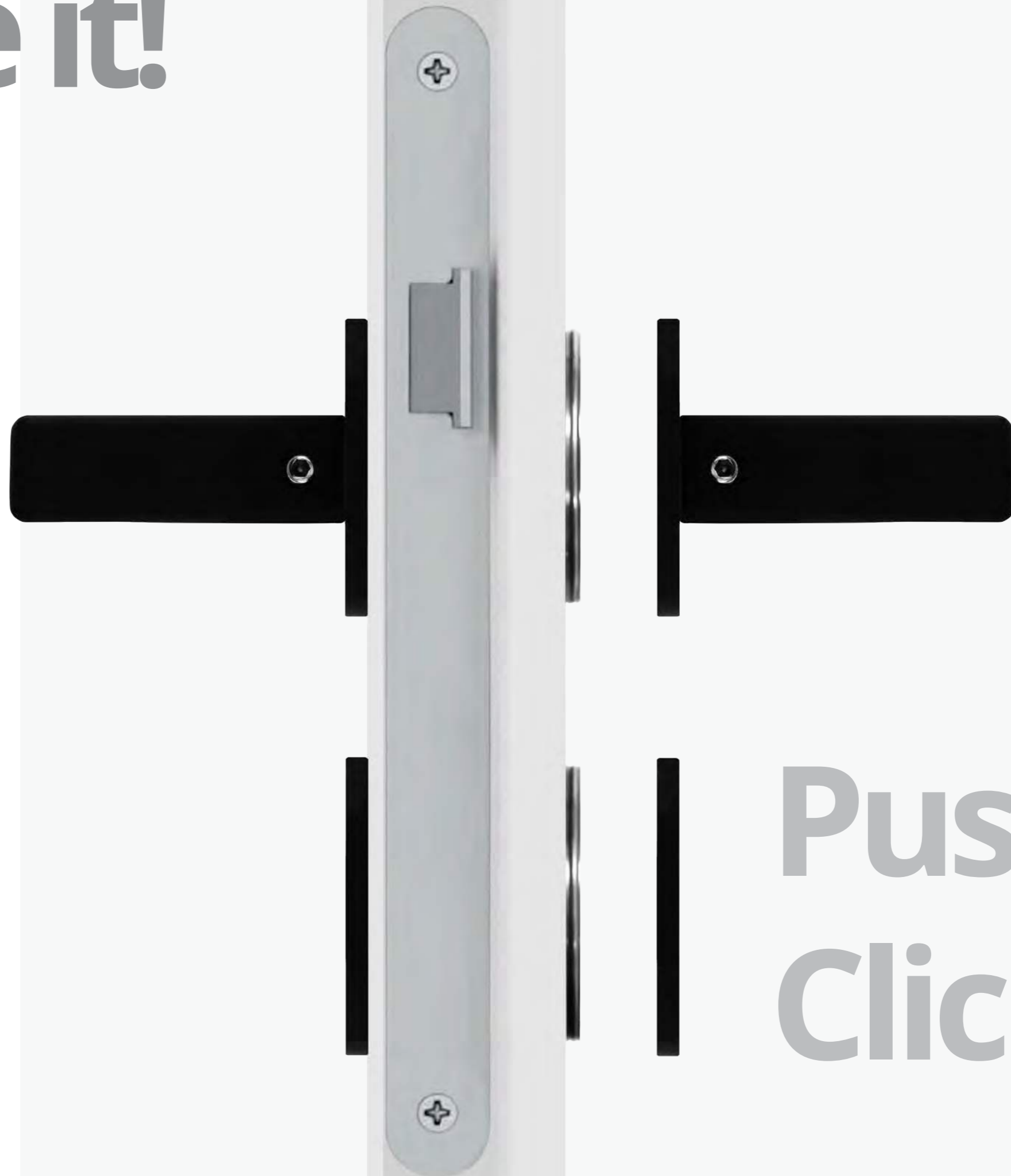
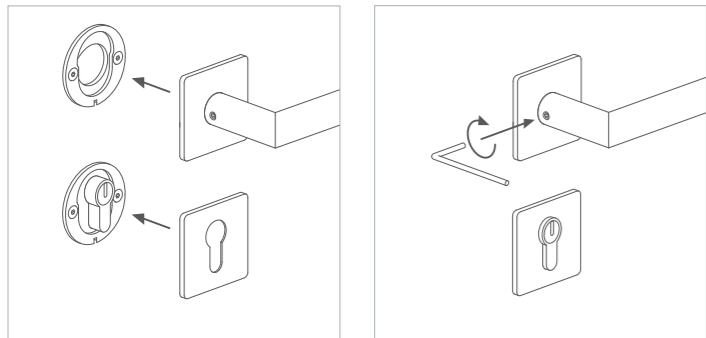
# Change it!

**With our "Push & Click" technology you can switch out door handles faster than ever before!**

This way any door handle can be switched at any time to match the interior design – in seconds. Once the base structure of the Flush Line has been mounted, handles can be attached as desired by pushing and clicking with "Push & Click".

The only tool that is needed is an Allen key, in order to tighten the clipped-on handle.

1. Choose the shape! Round or square?
2. Select your door handle model. Elegant, modern or timeless?
3. Select your surface.
4. Depending on the selected surface, you can select your customised colour choice!
5. Once our Flush Line base structure is mounted you can simply clip your new door handle on, tighten the grub screw & you're done!



# Push & Click!



# Safety first!

HAFI protective fittings – Tested. Certified. Safe.

## Break-in security



Protective fittings should effectively hinder forcible turning of the profile cylinder and a mechanical attack on the lock. HAFI protective fittings are recommended by the Bavarian Criminal Police Bureau, and are documented in the list of “protective fittings inspected and certified to DIN 18257”. Protective fittings certified to DIN 18257 are classified in the resistance classes ES 0 to ES 3, and/or certified to DIN EN 1906 (SK1 to SK4). Protective fittings from resistance class ES 1 and up are recommended.

## Fire protection



Fire protection fittings certified to DIN 18273 are components of the state building codes and/or Model Administrative Provisions - Technical Building Rules (MVVtB) and require a mark of conformity (ÜZ) as a usage certificate. In accordance with this legal guideline, HAFI fire protection fittings are quality-monitored and have a mark of conformity issued by the material testing agency NRW.

## Emergency exit



Panic fitting combinations certified to Norm DIN EN 179 are utilised for emergency exits, where panic situations can be reckoned with.

HAFI offers you a wide, extensive and multi-trade assortment with corresponding testing and certifications for the combination of approved fitting packages certified to Norm DIN EN 179.





# Flush Line

## HAFI Flush Line – Flush-mounted aesthetics and reduced rosette design.

We have adopted the design trend of reducing visible structures and have developed a new product line for door, window and lifting-sliding door handles.

The result is a combination of aesthetics, flush-mounted elements and winning easy installation.

The various surface variants in stainless steel that is polished, matte-brushed, or lacquered according to RAL request, enable the coverings of both window handles as well as lifting-sliding door handles to melt into one unit with the surface of the door element.

## Window handles

The HAFI window handle is mounted on a substructure with ball locking without visible maggot screw.

The patented “push-push” function enables tool-free assembly and disassembly of the cover by simply locking the rosette onto the substructure.

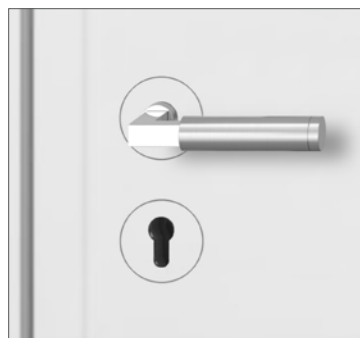
Due to the flushness of the surface, the respective window handle design comes to the fore.



## Door handle

Due to the reduced installation height of the rosette of only 4 mm with integrated, double-sided spring function, the Flush Line technology allows unrestricted use for object and fire doors.

Once the substructure has been fixed in or on the door leaf, the door handle with the cover rosette can be activated by a simple “push-click” function and by tightening a maggot screw can be fastened in no time.



## Lifting-sliding door handles

For the first time, the patented “push-push” function allows a lifting-sliding door to be flush-mounted in aluminium or wood sliding doors in an easy-to-install way. Lacquered in the same colour, the cover and the frame melt into one.





# exclusive

**exklusive. extraordinary. stylish.**

Would you like something special? Here we have put together a collection of door handles that are extravagant and different. Designs that were either created at HAFI's drawing tables or whose designs were created by great architects or design studios. The highest quality meets exclusive designs here.







# Industrial

## Industrial

Metal, concrete and the charm of an old warehouse. The loft style or industrial style thrives on reduction to functionality. The simple, rather cool but straightforward look - with corners and edges - is characterised by the combination of cold materials such as steel and concrete.



black



charcoal



cement



chalk



stainless steel

## HAFI Model 212

The HAFI Model 212 - Design by Studio F. A. Porsche - captivates by its Elegance. The alternation of polished and glass bead blasted surface combines comfortable ergonomics with aesthetics.



Scan in QR code &  
learn more!  
[www.premium.hafi.de](http://www.premium.hafi.de)







# Glamour

## Glamour

Exquisite and noble thanks to materials and surfaces such as stainless steel in a variety of finishes surface colours, velvet, stucco and real wood.

The glamour style is reminiscent of pompous royal houses and often also incorporates elements from the Baroque period.

Massive, sweeping pieces of furniture meet metallic sparkling it pieces here.



charcoal

cement

purple

rose

gold

## HAFI Model 248

The HAFI Model 248 is perfect for the glamorous living style. This model was specially designed for the luxury hotel Lutetia in Paris by Jean-Michel Wilmotte, an international architect & designer.



Scan in QR code &  
learn more!  
[www.hafi.de/produkte/248-870/](http://www.hafi.de/produkte/248-870/)



Design by  
Jean-Michel Wilmotte



# Comfortable



## Comfortable

High rooms flooded with light, light wood in combination with black metal, brass or rose gold create a cosy ambience. The wood creates a warm, cosy atmosphere, despite minimalist furnishings. The strong contrast of black metal gives the whole a frame and completes the picture.



charcoal



sand



chalk



rose gold

## HAFI Model 311

The HAFI Model 311 - Design by Studio F. A. Porsche is a real gem. The simple geometric shape with a highly polished, circumferential bevel is an absolute eye-catcher, but nevertheless not intrusive.



Scan in QR code &  
learn more!  
[www.premium.hafi.de](http://www.premium.hafi.de)





# Highlight

## Colour Highlight

Set colour highlights consciously! Restrained black and white design can be refreshed by color accents outstanding. Let the colour draw a „red thread“ through your interior design and skilfully repeat it in other accessories.



charcoal



chalk



brick

## HAFI Model 228

Angular and special, the HAFI Model 228 with its tapered shape functions perfectly as a colour highlight.



Scan in QR code &  
learn more!  
[www.hafi.de/produkte/228-870/](http://www.hafi.de/produkte/228-870/)





# Highlight

## Colour Highlight

Courage to color! A clean concrete look is blown up by a colour highlight. Accessories in the same colourful colours skillfully loosen up the cool atmosphere and attract attention.



charcoal



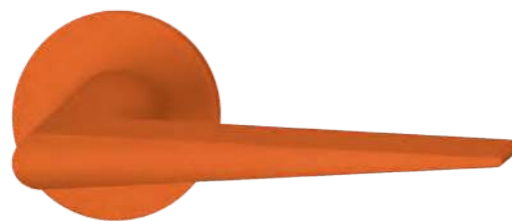
chalk



orange

## HAFI Model 228

Another example shows that the Model 228 with its wedge shape fits into many interiors. It's up to you to decide which colour and surface of the 228 the i-dot will be applied to your interior!



Scan in QR code &  
learn more!  
[www.hafi.de/produkte/228-870/](http://www.hafi.de/produkte/228-870/)







# Skandi

## Skandi

Lots of wood and warm earth tones but still a certain simplicity. The Scandinavian living style stands for cosiness & lightness. Massive elements, despite much real wood, are rather avoided around an atmosphere of the to create freedom that lets you breathe. Reduced forms underline the feeling of openness.



## HAFI Model 241

The HAFI Model 241, designed by Bastian Scholz, fits perfectly into the Scandinavian style of living with its straight lines.



Scan in QR code & learn more!  
[www.hafi.de/produkte/241-880/](http://www.hafi.de/produkte/241-880/)







# Pure

## Pure

Clear, minimalist and pure - this is what distinguishes purism. The focus is on a few, but very high-quality highlights. A perfect balance between elegant restraint and exciting accents. The colours white, grey or soft natural tones dominate, coloured accents are only used sparingly and consciously.



grey



chalk



gold

## HAFI Model 215

The Model 215 is an exciting accent in polished PV brass. The curve of the lever handle invites you to a haptically pleasant experience and captivates with its simplicity and elegance.



Scan in QR code &  
learn more!  
[www.hafi.de/produkte/215-870/](http://www.hafi.de/produkte/215-870/)





# Urban

## Urban

The pulse of the great world metropolises can continue to beat in your own four walls. In the urban living style, the colour grey - in all its facets - is the colour of choice that reflects the charm of concrete and tar of the big cities into the interior. Clinker walls, unplastered walls, linear forms and clear pieces of furniture are dominated by the colour grey and are characterised by optical accents loosened up.



black



charcoal



dark brick



cement



chalk

## HAFI Model 218 L

Model 218 L combines a very modern and stylish look with PVD black finishes and a black genuine leather handle.



Scan in QR code &  
learn more!  
[www.hafi.de/produkte/218l-870/](http://www.hafi.de/produkte/218l-870/)







# Retro

## Retro

Whether brightly coloured colours or discreet pastel shades - the retro style allows both. Daring combinations, unusual shapes and expressive colours were the hallmarks of the design from 1950 to 1970.



navy



chocolate



azure



cement



purple

## HAFI Model 245

The HAFI Model 245 in a gaudy azure blue fits with the round, high-rise cantoval shape perfectly in the retro style.



Scan in QR code &  
learn more!  
[www.hafi.de/produkte/245-870/](http://www.hafi.de/produkte/245-870/)





# Nature

## Retro

Brown tones also characterise the retro style. Massive objects with massive curves attract the eye and, together with the earth tones, create an atmosphere of well-being. Rose gold or dark bronze can be perfectly integrated into this interior style and enhance the warm aura.



navy



mocha



sand



cement



rose gold

## HAFI Model 245

The HAFI Model 245 does not only work in bright colours - in rose gold this lever handle is polished to an absolute highlight and harmonises wonderfully with warm tones and metallic accessories in the same colour.



Scan in QR code &  
learn more!  
[www.hafi.de/produkte/245-870/](http://www.hafi.de/produkte/245-870/)







# Bauhaus

## Bauhaus

The Bauhaus style - pioneer of modernity and the high school of reduction. Furniture and objects designed according to the motto „Form follows function“ characterise the Bauhaus style. The Bauhaus School was founded in 1919 and existed for only 14 years. The influence of the Bauhaus style, however, continues to the present day and is today regarded worldwide as the home of the Avant-garde of classical modernism.



cement



sand



chalk



stainless steel

## HAFI Modell 245

The HAFI Model 245 in classic matt stainless steel perfectly matches the Bauhaus style. With different surfaces and colours you can adapt each model to your furnishing style.



Scan in QR code &  
learn more!  
[www.hafi.de/produkte/245-870/](http://www.hafi.de/produkte/245-870/)





# Contemporary



## Contemporary

Unobtrusive colours such as white, grey and black are an absolute evergreen in interior design. In combination with more daring colours and metallic surfaces, they look absolutely modern.



## HAFI Model 247

The ascending profile line of the HAFI Model 247 - Design by AIA Life Designers - gives the lever handle the appearance of a bird's wing and thus fits perfectly into a modern one, airy interior.



Scan in QR code &  
learn more!  
[www.hafi.de/produkte/247-870/](http://www.hafi.de/produkte/247-870/)





# exclusive

## Door handles



215 / 870



218L / 870



218L Q / 880



228 / 870



228 Q / 880



241 Q / 880



245 / 870



245 Q / 880



247 / 870



248 / 870



311 / 870



212 / 880

## Security fittings



520 PZ / 280 / 245



524 PZ / 245 / 245



522 PZ / 283 / 245



526 PZ / 245 / 245



# exclusive

## Window handles



218 L / 430



218 L / 431



228 / 430



228 / 431



Design by  
Bastian Scholz

241 / 430



Design by  
Bastian Scholz

241 / 431



245 / 430



245 / 431



Design by  
Jean-Michel Wilmotte

248 / 430



Design by  
Jean-Michel Wilmotte

248 / 431



Design by  
Jean-Michel Wilmotte

248T / 430



Design by  
Jean-Michel Wilmotte

248T / 431



Design by  
STUDIO F-A-PORSCHE

311 / 430

## Lifting sliding door handles



202XXL / 450  
202XXL / 451



203XXL / 450  
203XXL / 451



209XXL / 450  
209XXL / 451



218XXL / 450  
218XXL / 451



224XXL / 450  
224XXL / 451



244XXL / 450  
244XXL / 451



245XXL / 450  
245XXL / 451



You want to see more?

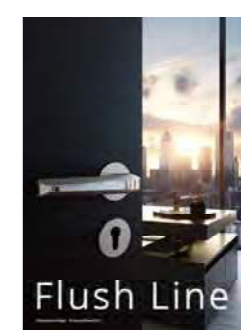
Then simply contact us at [vertrieb@hafi.de](mailto:vertrieb@hafi.de) or take a look at our homepage under Downloads.



Wohnraum – Product overview



244 UNStudio



HAFI - Flush Line



## CONTACT

HAFI Beschläge GmbH  
Weißinger Straße 16  
D-89275 Elchingen

phone +49(0) 7308 96 04 0  
fax +49(0) 7308 96 04 15  
mail [info@hafi.de](mailto:info@hafi.de)

[www.hafi.de](http://www.hafi.de)



**DGNB**  
Deutsches Institut für Nachhaltiges Bauen e.V.  
German Sustainable Building Council