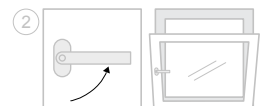
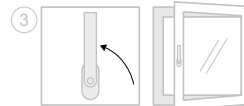


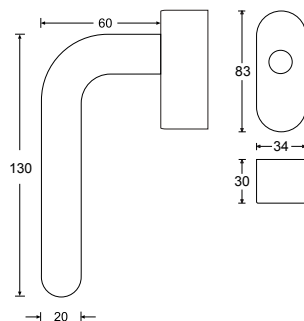
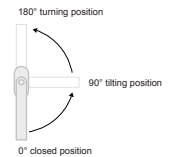
① Closure possible tilting window with movement in pos. 2 possible




② Closure possible closing window with movement in pos. 1 possible





③ Closure not possible pushing in the cylinder and removing the key not possible



HAFI Public Line – Design 226/446

 Lockable sub-construction, oval form, fitting all models of the Public Line

  Tilt-before-turn variant with forced closure

Can be mounted with the cylinder towards the top or the bottom also available in angular design

- Satin stainless steel
- Polished stainless steel
- PVD coating
- SoftTouch coating